

vides should be non-existent, but at present the need for it is urgent.

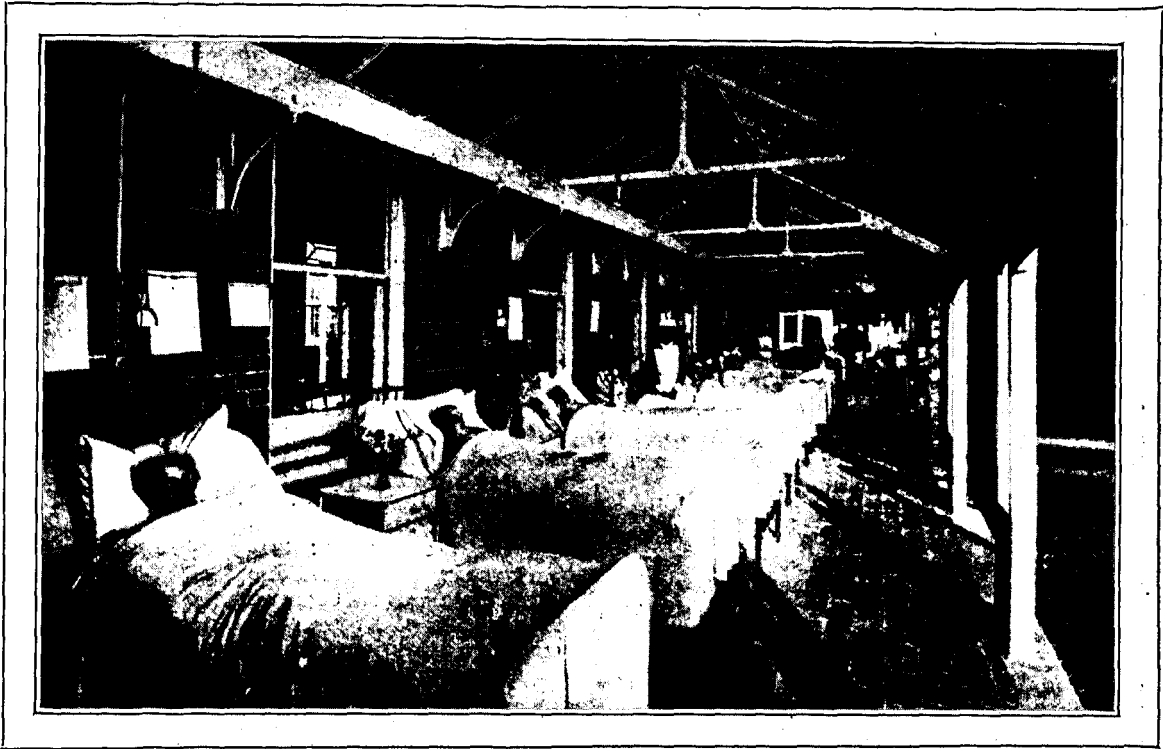
It contains 25 beds for septic cases, including those of puerperal fever, and though the accommodation has been increased from 8 to 25 beds, there is still great pressure upon them. No one, says the Matron, had any idea, until this ward was opened, and cases of puerperal fever systematically sent for treatment, of the extent to which it existed in the city, and what formerly happened to such cases is unimaginable. We may infer that the same thing is going on all over the country, and that there is urgent need for the provision of similar accommodation in every city, as well as in that which in this respect is living up to its motto of "Forward." At Manchester we know

is likely to be a permanent and precious possession, as the hospital has secured the surrounding land.

Brief mention only can be made of the Chapel, for the equipment of which the Matron and nurses raised £200 last year; and the beautiful little mortuary, where the bodies of those who have passed away are reverently cared for.

In addition to the Convalescent Home near the Hospital of which Miss Julia Richmond is the Matron, the Gertrude Myers Home at Cleeve Prior, near Evesham, has recently been placed at the disposal of the hospital authorities.

The Taylor Memorial Home of Rest, at Showell Green House, of which Miss Reid, for some years a Sister at the Women's Hospital is Matron, is for patients incurably ill.



VERANDAH, NEW MARGARET WARD.

that puerperal fever cases are, greatly to their advantage, received at the Monsall Fever Hospital.

It will be noticed that the special point about the Margaret Ward is that the whole of the front is open and the fresh air blows freely around these patients in whose systems septic poisons are circulating, and under these conditions, combined with the best medical treatment and nursing care, a large proportion speedily improve, although, alas! the death-rate of the hospital has greatly increased since these cases were received. It is sad to learn how many cases of lead-poisoning—indicating attempted abortion—are admitted for treatment. The beautiful view of open country at the back of the hospital, overlooked by the Margaret Ward,

VIROL.

It would hardly be possible to present a more satisfactory report than that made to the shareholders of Virol Ltd. last week. In three years the turnover and profits of the Company have more than doubled, and the business with hospitals and consumption sanatoria continue to expand. The directors consequently recommended the payment of a dividend of 12½ per cent. Virol is held in high honour by many members of the medical profession, an opinion which investigations in the new Virol laboratories in Bedford Square, with the opportunities they afford of scientific research will do much to strengthen. Virol as most nurses know is a highly concentrated food.

[previous page](#)

[next page](#)